

UTILITY-SCALE ESS SOLUTION

DEYE WINTER WS SERIES



Integrated Technology

- LC, PCS, and battery integrated
- EMS for system management
- ATS for on/off-grid switching
- 1 MW PCS output
- System energy capacity: 2057 kWh
- System size and weight: 20ft, 25,000 kg



Performance

- 1.1x overload, 1.5x overload
- Max RTE: 88.5%
- System Operating Conditions :
-20 °C ~ 55 °C | IP54 | C4-M
- Supports 2 PCS & 2 MW off-grid



Advanced Safety

- 1-hour fire resistance
- Combustible gas detection, smoke evacuation, aerosol extinguishers, water sprinklers



Applications

- Support black start function
- Support off-grid operation & back up
- Support peak shaving
- Transformer capacity control

4 Level

Power Redundancy Design

88.5%

Max.RTE

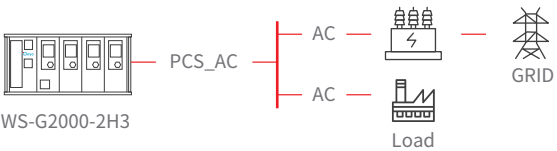
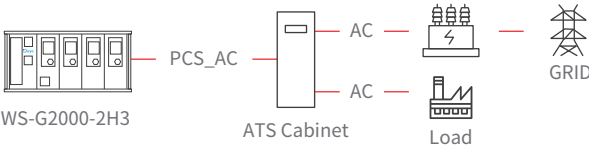
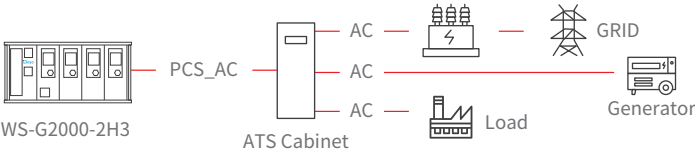
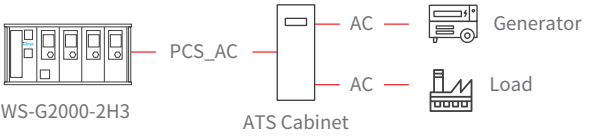
8000Cycles

EOL 70%

10 Years

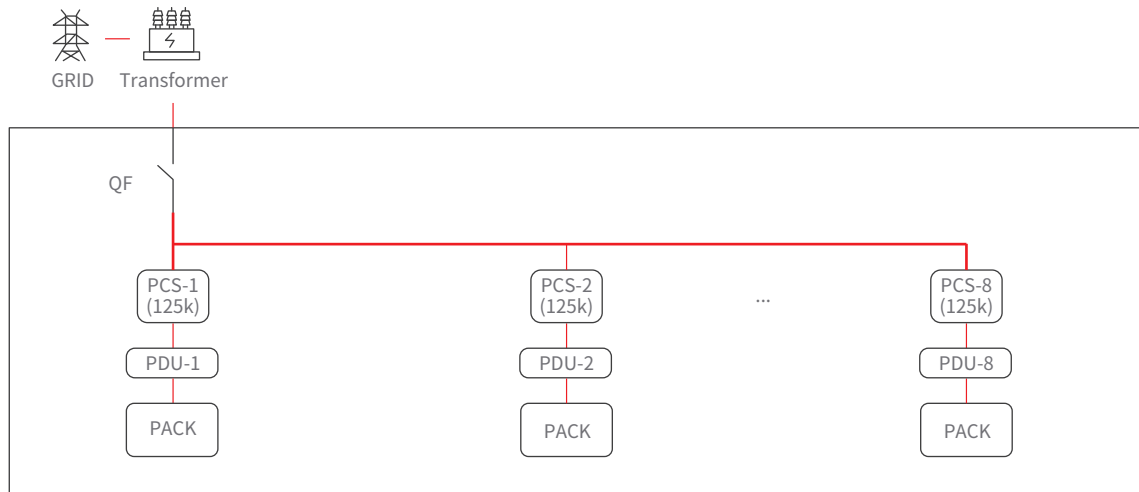
Warranty

Model	WS-G2000-2H3
AC parameter	
Rated power	1000kW
Max. Apparent Power	1100kVA
Rated Voltage/Range	400V/0.85Un-1.1Un
Grid Connection Form	3L+N+PE
Frequency/Range	50Hz/45Hz-55Hz
Power Factor Adjustment Range	0.8 leading-0.8lagging
Total Current Harmonic Distortion (THDi)	<3% (of Rated power)
DC Injection Current	<0.5% In
Max.RTE	88.50%
Battery parameter	
Cell type	LFP
Battery configuration	256S1P*8
Battery energy	2057kWh
Battery voltage range	691.2~921.6Vdc
Other parameter	
Fire protect system	Gas fire protection+Water fire protection
cooling type	Small air cooling
Communication port	RJ45
Communication protocol	Modbus TCP, IEC104, IEC61850
Operating ambient	-20~55 °C
Humidity	0%~90%RH
Altitude	3000m
IP rating of enclosure	IP54
anti-corrosion level	C4-M
seismic grade	Moderate performance level (0.5g)
Dimension (W/D/H,mm)	20ft (HC)
Weight approximate (kg)	25000kg
Installation Location	Floor mount
Recommend storage temperature (°C)	0~35
Cycle Life	25±2°C,0.5P, EOL70%≥8000
Warranty	10years

Categorisation	Combination	Application block diagram
	Energy Storage Only	 <p>WS-G2000-2H3</p>
On-grid/On-grid、 Off-grid Switching	Energy Storage/Backup Power	 <p>WS-G2000-2H3</p> <p>ATS Cabinet</p>
	Energy Storage+Generator	 <p>WS-G2000-2H3</p> <p>ATS Cabinet</p>
Off-grid	Energy Storage+Generator	 <p>WS-G2000-2H3</p> <p>ATS Cabinet</p>

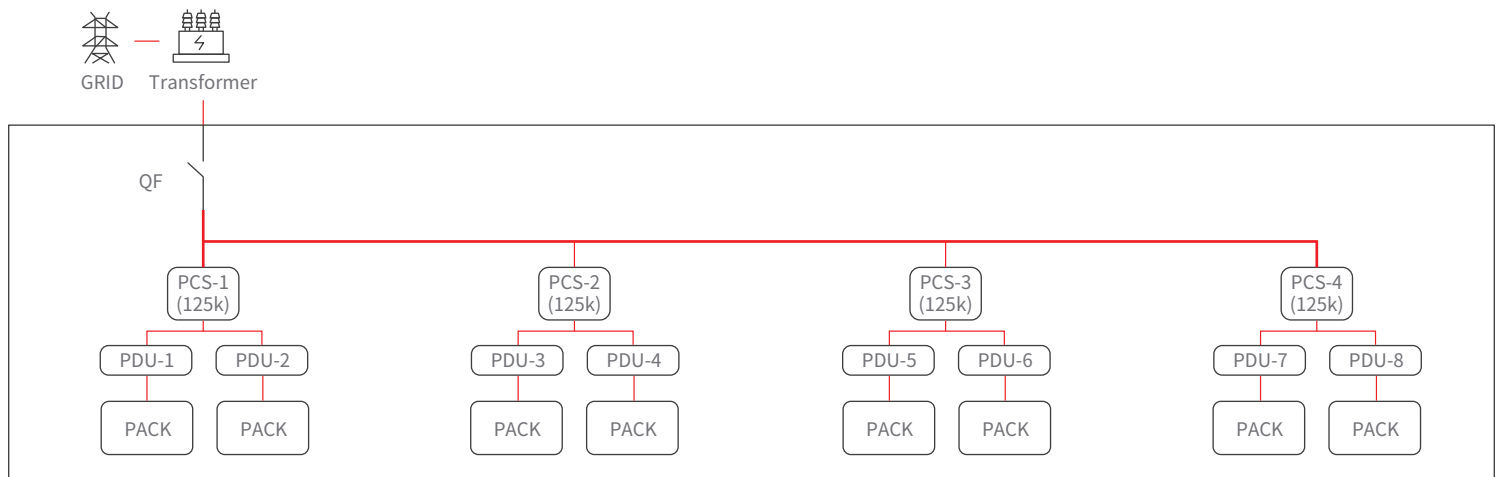
2-hour Energy Storage Solution

1MW/2MWh(2h)



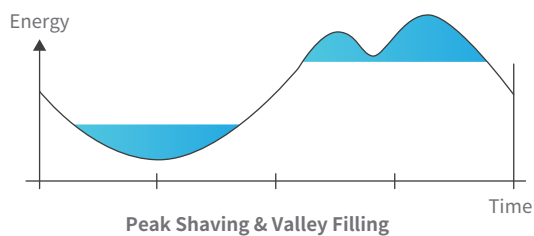
4-hour Energy Storage Solution

0.5MW/2MWh(4h)

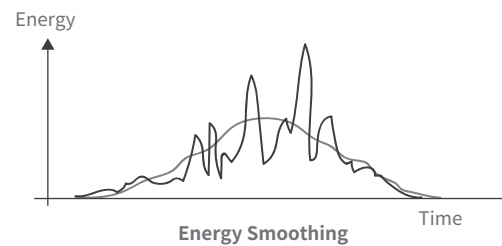


Application Scenarios

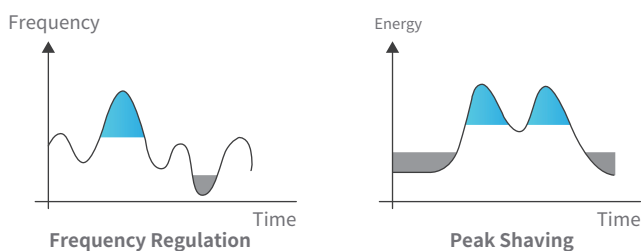
1. Applied in medium to large-scale C&I applications (Peak Shaving & Valley Filling)



2. Integrated with renewable energy storage systems to smooth power output



3. Used for Peak Shaving and Frequency Regulation on the power generation side



4. Participates in virtual power plants to provide ancillary power services (electricity trading)

